



REGIONAL SPECIALISED METEOROLOGICAL CENTRE-TROPICAL CYCLONES, NEW DELHI  
TROPICAL CYCLONE ADVISORY BULLETIN NO. 2

FROM: RSMC –TROPICAL CYCLONES, NEW DELHI

TO: STORM WARNING CENTRE, NAYPYI TAW (MYANMAR)  
STORM WARNING CENTRE, BANGKOK (THAILAND)  
STORM WARNING CENTRE, COLOMBO (SRILANKA)  
STORM WARNING CENTRE, DHAKA (BANGLADESH)  
STORM WARNING CENTRE, KARACHI (PAKISTAN)  
METEOROLOGICAL OFFICE, MALE (MALDIVES)  
OMAN METEOROLOGICAL DEPARTMENT, MUSCAT (THROUGH RTH JEDDAH)  
YEMEN METEOROLOGICAL SERVICES, REPUBLIC OF YEMEN (THROUGH RTH JEDDAH)  
NATIONAL CENTRE FOR METEOROLOGY, UAE (THROUGH RTH JEDDAH)  
PRESIDENCY OF METEOROLOGY AND ENVIRONMENT, SAUDI ARABIA (THROUGH RTH JEDDAH)  
IRAN METEOROLOGICAL ORGANISATION, (THROUGH RTH JEDDAH)  
QATAR METEOROLOGICAL DEPARTMENT (THROUGH RTH JEDDAH)

TROPICAL CYCLONE ADVISORY NO. 2 FOR NORTH INDIAN OCEAN (THE BAY OF BENGAL AND ARABIAN SEA) VALID FOR NEXT 120 HOURS ISSUED AT 1800 UTC OF 16.05.2020 BASED ON 1500 UTC OF 16.05.2020.

**SUB:** THE CYCLONIC STORM 'AMPHAN' (PRONOUNCED AS UM-PUN) OVER SOUTHEAST BAY OF BENGAL AND NEIGHBOURHOOD.

THE CYCLONIC STORM '**AMPHAN**' (PRONOUNCED AS **UM-PUN**) OVER SOUTHEAST BAY OF BENGAL AND NEIGHBOURHOOD MOVED NORTHWESTWARDS SLOWLY DURING PAST 06 HOURS AND LAY CENTRED OVER THE SAME REGION AT 1500 UTC OF TODAY, THE 16<sup>TH</sup> MAY, 2020 NEAR LATITUDE 11.0°N AND LONGITUDE 86.2°E, ABOUT 1030 KM SOUTH OF PARADIP (42976), 1190 KM SOUTH-SOUTHWEST OF DIGHA (42901) AND 1290 KM SOUTH-SOUTHWEST OF KHEPUPARA (41984). IT IS VERY LIKELY TO INTENSIFY FURTHER INTO A SEVERE CYCLONIC STORM DURING NEXT 12 HOURS AND INTO A VERY SEVERE CYCLONIC STORM BY 18<sup>TH</sup> MORNING. IT IS VERY LIKELY TO MOVE NORTH-NORTHWESTWARDS INITIALLY TILL 17<sup>TH</sup> MAY AND THEN RE-CURVE NORTH-NORTHEASTWARDS ACROSS NORTHWEST BAY OF BENGAL TOWARDS WEST BENGAL AND ADJOINING NORTH ODISHA COASTS DURING 18<sup>TH</sup> TO 20<sup>TH</sup> MAY 2020.

**FORECAST TRACK AND INTENSITY ARE GIVEN IN THE FOLLOWING TABLE:**

DATE/TIME(UTC)	POSITION (LAT. °N/ LONG. °E)	MAXIMUM SUSTAINED SURFACE WIND SPEED (KMPH)	CATEGORY OF CYCLONIC DISTURBANCE
16.05.20/1500	11.0/86.2	65-75 GUSTING TO 85	CYCLONIC STORM
16.05.20/1800	11.1/86.1	70-80 GUSTING TO 90	CYCLONIC STORM
17.05.20/0000	11.7/86.0	80-90 GUSTING TO 100	CYCLONIC STORM
17.05.20/0600	12.2/86.0	85-95 GUSTING TO 105	SEVERE CYCLONIC STORM
17.05.20/1200	12.8/86.0	105-115 GUSTING TO 125	SEVERE CYCLONIC STORM
18.05.20/0000	14.0/86.0	125-135 GUSTING TO 150	VERY SEVERE CYCLONIC STORM
18.05.20/1200	15.1/86.1	145-155 GUSTING TO 170	VERY SEVERE CYCLONIC STORM
19.05.20/0000	16.7/86.4	160-170 GUSTING TO 190	EXTREMELY SEVERE CYCLONIC STORM
19.05.20/1200	18.3/86.8	160-170 GUSTING TO 190	EXTREMELY SEVERE CYCLONIC STORM
20.05.20/0000	20.1/87.4	155-165 GUSTING TO 180	VERY SEVERE CYCLONIC STORM
20.05.20/1200	22.2/88.0	135-145 GUSTING TO 160	VERY SEVERE CYCLONIC STORM

**PROBABILITY OF CYCLOGENESIS (FORMATION OF DEPRESSION)**

**NIL: 0%, LOW: 1-25%, FAIR: 26-50%, MODERATE: 51-75% AND HIGH: 76-100%**

21.05.20/0530	24.4/88.5	80-90 GUSTING TO 100	CYCLONIC STORM
21.05.20/1730	26.0/89.0	40-50 GUSTING TO 100	DEPRESSION

**REMARKS:**

AS PER INSAT-3D SATELLITE IMAGERY BASED ON 1500 UTC OF TODAY, THE 16<sup>TH</sup> MAY, VORTEX OVER SE BAY & N/HOOD HAS FURTHER INTENSIFIED RAPIDLY. THE CURRENT INTENSITY OF THE SYSTEM IS T 2.5 ASSOCIATED WITH CDO PATTERN. MINIMUM CLOUD TOP TEMPERATURE IS -93 DEG CELCIUS. ASSOCIATED BROKEN LOW/MEDIUM CLOUDS WITH EMBEDDED INTENSE TO VERY INTENSE CONVECTION OVER BAY BETWEEN LAT 5.0°N TO 16.0°N LONG 81.0°E TO 91.0°E.

THE ESTIMATED MAXIMUM SUSTAINED WIND SPEED IS 40 KNOTS GUSTING TO 50 KNOTS. THE SEA CONDITION IS VERY ROUGH TO HIGH AROUND THE SYSTEM CENTER. THE ESTIMATED CENTRAL PRESSURE IS 996 HPA.

AT 1500 UTC OF 16<sup>TH</sup> MAY, A BOUY (23094) LOCATED AT 13.4°N/84.2°E REPORTED A MEAN SEA LEVEL PRESSURE OF 1003.0 HPA AND MEAN SURFACE WIND SPEED OF 50°/05 KNOTS AND ANOTHER BOUY (23459) LOCATED AT 14.0°N/86.9°E REPORTED A MEAN SEA LEVEL PRESSURE OF 1003.2 HPA AND MEAN SURFACE WIND SPEED OF 80°/18 KNOTS.

THE MADDEN JULIAN OSCILLATION (MJO) INDEX IS CURRENTLY IN PHASE 2 WITH AMPLITUDE MORE THAN 1. IT WILL CONTINUE IN SAME PHASE TILL 17<sup>TH</sup> MAY WITH AMPLITUDE REMAINING MORE THAN 1 AND BECOMING LESS THAN 1 THEREAFTER IN PHASE 3. THUS MJO WILL SUPPORT ENHANCEMENT OF CONVECTIVE ACTIVITY AND HENCE THE INTENSIFICATION OF THE SYSTEM.

CONSIDERING THE SEA CONDITIONS, THE SEA SURFACE TEMPERATURE (SST) IS 30-31°C OVER ENTIRE BOB. THE TROPICAL CYCLONE HEAT POTENTIAL IS MORE THAN 100 KJ/CM<sup>2</sup> OVER MAJOR PARTS OF SOUTH & CENTRAL BOB. IT IS ABOUT 60-80 KJ/CM<sup>2</sup> OVER BOB TO THE NORTH OF 17°N AND IS DECREASING TOWARDS EXTREME NORTH BOB.

CONSIDERING THE ENVIRONMENTAL CONDITIONS, THE ENHANCED POSITIVE VORTICITY ZONE IS BEING MAINTANED DURING PAST 6 HOURS (MORE THAN 200X10<sup>-6</sup>SEC<sup>-1</sup>) AROUND THE SYSTEM CENTRE WITH VERTICAL EXTENSION UPTO 200 HPA LEVEL. THE LOWER LEVEL CONVERGENCE ZONE IS AROUND 20X10<sup>-5</sup>SEC<sup>-1</sup> LOCATED OVER SOUTHWEST OF THE SYSTEM CENTRE. UPPER LEVEL DIVERGENCE OF 30X10<sup>-5</sup>SEC<sup>-1</sup> LOCATED OVER SOUTHWEST OF THE SYSTEM CENTRE. VERTICAL WIND SHEAR (VWS) HAS FURTHER DECREASED AND IS LOW TO MODERATE (10-15 KTS) AROUND THE SYSTEM CENTRE. IT IS INCREASING TO NORTH OF LAT. 15 N ALONG THE EXPECTED TRACK. THE UPPER TROPOSPHERIC RIDGE LIES NEAR 12.0 N OVER BOB. TOTAL PRECIPITABLE WATER IMAGERY AT 1041 UTC OF 16<sup>TH</sup> MAY INDICATES WARM MOIST AIR INCURSION OVER THE SYSTEM AREA.

VARIOUS NUMERICAL MODELS INCLUDING ECMWF, IMD GFS, NCEP GFS, GEFS, NEPS AND NCUM ARE INDICATING RAPID INTENSIFICATION OF THE SYSTEM INTO VERY SEVERE CATEGORY AND MOVEMENT TOWARDS WEST BENGAL AND ADJOINING ODISHA AND BANGLADESH COASTS. THE FORECAST IS BASED AS THE CONCENSUS FROM VARIOUS MODELS.

**(D R PATTANAİK)**  
**SCIENTIST-F, RSMC, NEW DELHI**

---

**PROBABILITY OF CYCLOGENESIS (FORMATION OF DEPRESSION)**

**NIL: 0%, LOW: 1-25%, FAIR: 26-50%, MODERATE: 51-75% AND HIGH: 76-100%**



SAT : INSAT-3D IMG

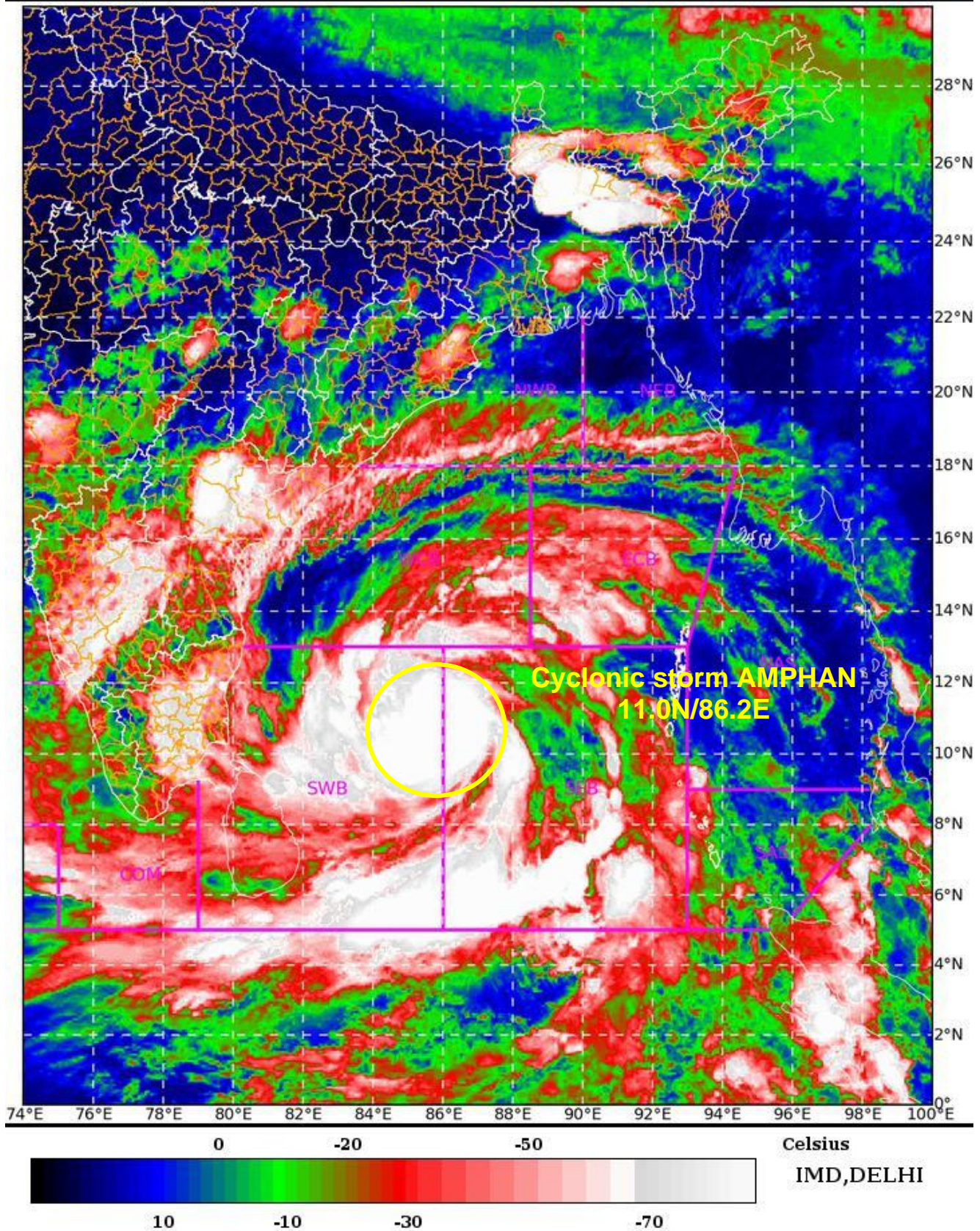
16-05-2020/(1630 to 1656) GMT

IMG\_TIR1\_TEMP 10.8 um

16-05-2020/(2200 to 2226) IST



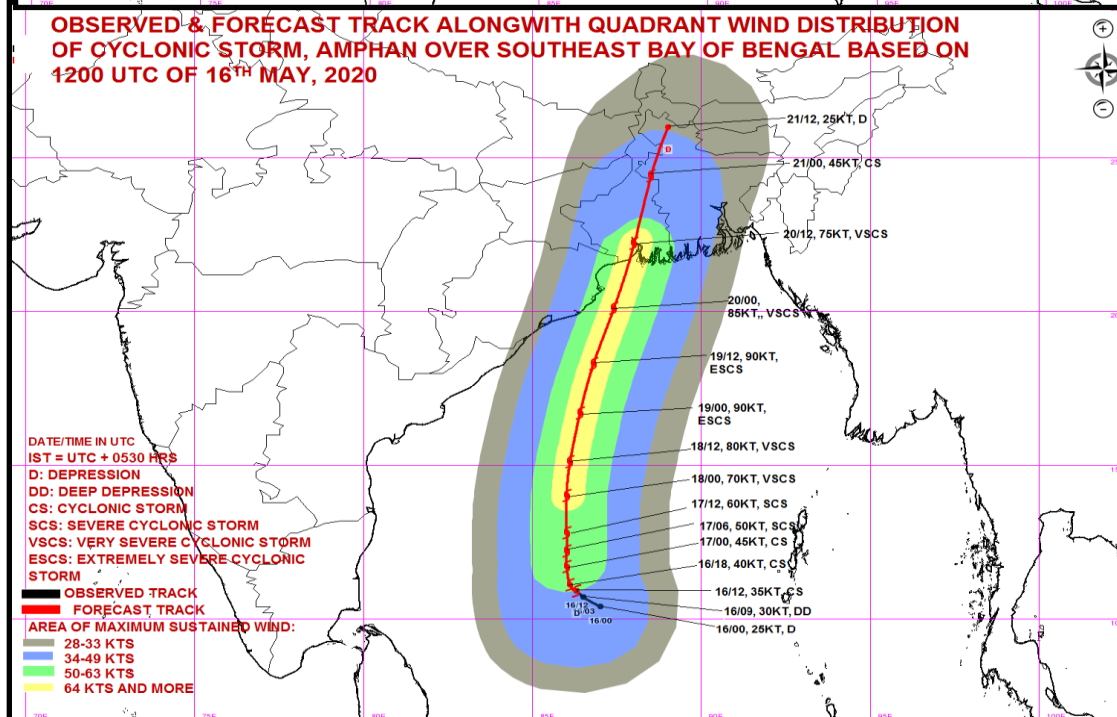
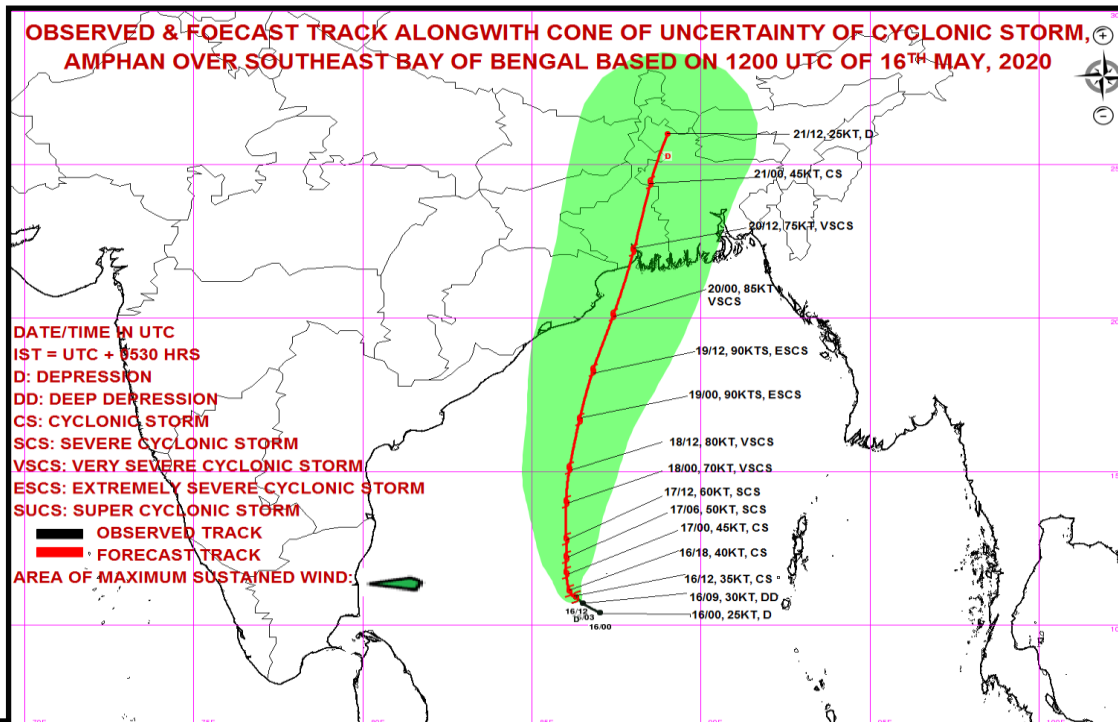
L1C Mercator



**PROBABILITY OF CYCLOGENESIS (FORMATION OF DEPRESSION)**

**NIL: 0%, LOW: 1-25%, FAIR: 26-50%, MODERATE: 51-75% AND HIGH: 76-100%**





MSW(knot)/kmph	Impact	Action
28-33 / (52-61 )	Very rough seas.	Total suspension of fishing operations
34-40/(62-74)	High to very high seas	Total suspension of fishing operations
41-63/(75-117)	Very High seas	Total suspension of fishing operations
≥ 64 (≥118)	Phenomenal	Total suspension of fishing operations

**PROBABILITY OF CYCLOGENESIS (FORMATION OF DEPRESSION)**

**NIL: 0%, LOW: 1-25%, FAIR: 26-50%, MODERATE: 51-75% AND HIGH: 76-100%**